

## Case # 8

You are a Network Consultant with specialized skills in designing Win2000 directory services. You are recently requested by ProX Auditing Group to design the Active Directory for the entire company.

### Background

ProX Auditing Group uses a logical sequence of steps to perform audits in the most efficient, effective, and timely manner possible. Its audits comply with the highest professional standards and lend credibility to client company's financial statements. Its experts can assist the clients in improving internal controls and operating efficiency, as well as recommend enhancements to make client company more profitable.

ProX offers the following audit services:

#### ProX Austin

- General financial audits
- Review of agreed-upon procedures
- Analysis of internal and operating controls
- Review of computer systems for proper operation and control procedures

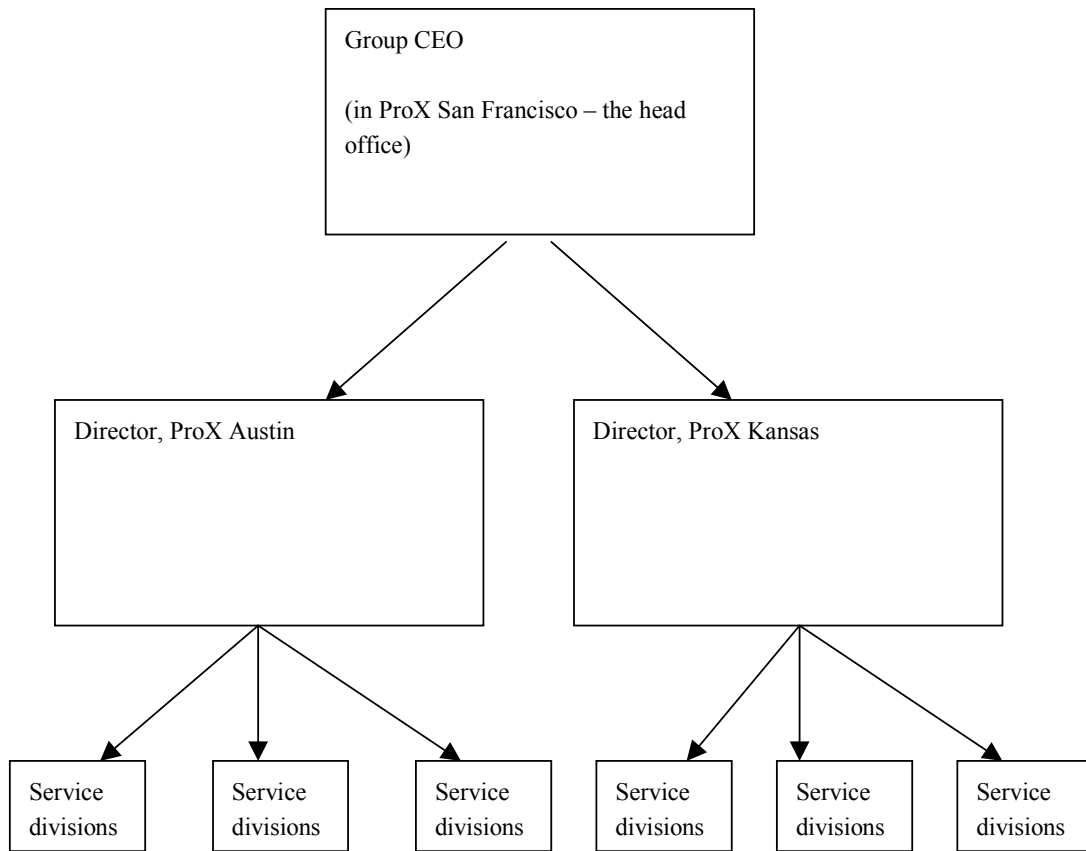
#### ProX Kansas

- Due diligence audits for mergers and acquisitions
- Federal single audit compliance
- Compliance with GAO "Yellow Book" requirements
- Compliance with grant requirements
- Compliance with loan covenants/regulatory requirements

### Client sectors:

Agriculture  
Auto Dealers and Auto Repair  
Beverages  
Construction and Logging  
Financial Institutions and Trusts  
Governmental  
Health Care Professionals  
Lodging and Food Service  
Insurance Services  
Manufacturing  
Non-Profit Organizations  
Professional Service Firms  
Real Estate  
Retail and Wholesale Businesses  
Timber  
Trucks and Transportation

## Organization Structure



The SF office is the head office. All the offices share the same set of rules and standards.

The three ProX offices are interconnected with high speed T1 lines. Currently they are running on Netware 4.X. However, for file sharing, some NT servers are deployed as well. These NT servers are working together with the Netware 4.X servers on the same network. Clients are mainly Win98 based.