

## Case Study # 6

You are a Network Consultant with specialized skills in designing Win2000 directory services. You are recently requested by MediAssociate to design the Security and the Directory for the entire company.

### Background

#### MediAssociate

Since 1986, MediAssociate has been conducting research for legal and health care professionals involved in medical malpractice, personal injury, product liability and workers' compensation cases. Target customers are those who are overwhelmed with complicated health care issues and baffling medical jargon. The founders of MediAssociate has been in the medical-legal consultant field for over ten years. They have been providing consulting services for attorneys, physicians and other legal nurse consultants.

### Services

*MediAssociate searches medical literature* for articles, standards and guidelines that will enhance customer's understanding of the case. The search is conducted by RNs experienced in the field, is supplemented with summaries of key articles, and conference sessions to answer the questions.

*MediAssociate locates qualified expert physicians* and nurses whose accurate opinions will bolster customer's position. Its nationwide network of specialists includes both consulting and testifying experts. MediAssociate can find the ideal expert fast, then help the customer to prepare that expert for deposition or trial.

*MediAssociate nurses will accompany the customers* during their Independent Medical Examinations. These nurses will be prepared to offer testimony during deposition and trial.

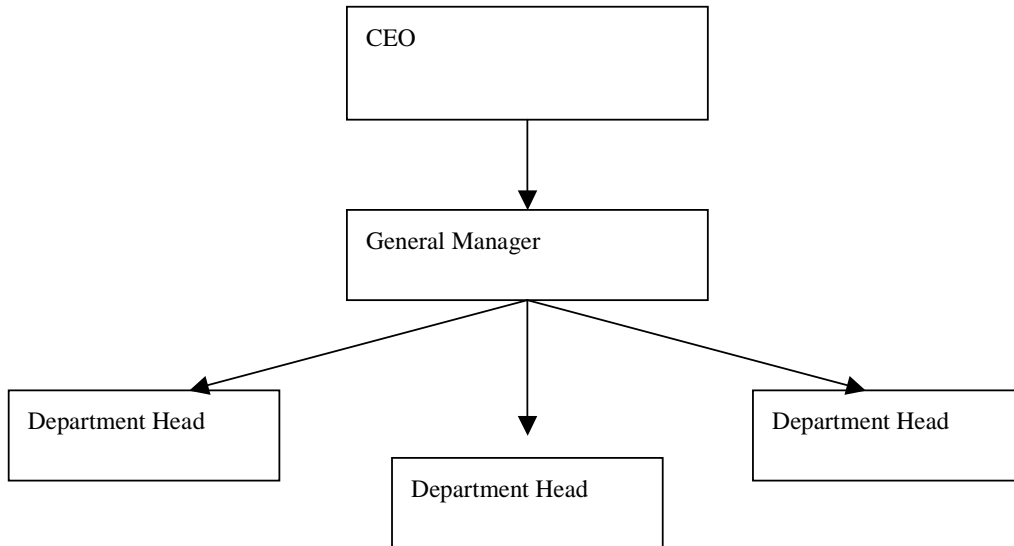
### IT Structure

To offer the services listed above, MediAssociate has a very advanced IT infrastructure. Their network deploys fiber optics to connect their office in down town San Jose. The network is running 25 NT 4 Servers and 300 clients. To speed up research, they use a T3 line to connect to the internet. In addition, there are 4 Solaris workstations specially designed for a fault tolerant web site configuration.

In addition, there are 5 offices in different parts of Phoenix, as well as two offices in Austin and Kansas City.

## Organization Structure

The company is structured in a way that reflects the services it offers. There are mainly 3 departments in the company, one for each main service.



## Visions

The company is expected to expand its network of affiliated professionals. Currently they have more than 25000 professionals in their network nationwide. These professionals are allowed to connect to the head office via dial up access. Due to the fast growth in business, it is estimated that in three years time the number of professionals that work with the company will be doubled.

Since to a certain extent these professionals are not in house staffs, the company will want to have a separate community for them. This community should manage their own password and lockout policy on their own.

The existing NT4 network was built with scalability in mind. There are 2 account domains together with 5 resource domains.

The CIO wants to upgrade the network to W2K. He is impressed by the stability of the new OS.

One thing the CIO really wants to implement is some sort of Smartcard devices for the in house staffs to log onto the network. He believes in technologies like Smartcard being the trend of the future.

In addition, there is a need for a secure web site to host critical sales information for staffs to access.