

## Case Study # 1

You are a Network Consultant with specialized skills in designing Win2000 directory services. You are recently requested by the Rocky Mountain School of Music to design the Network and the Security structure for the entire school.

### School Mission

The mission of the Rocky Mountain School of Music is to advance the art of music and its related disciplines. It seeks to educate students in the various fields of the profession and to promote an understanding of music. The School endeavors to preserve diverse repertoires and cultural traditions while also creating opportunities for artistic, intellectual, and scholarly innovation in the realm of music. The School is dedicated to excellence in research, performance, composition, and teacher education, undertaken in a spirit of collaboration among its own constituents.

### School Background

The Rocky Mountain School of Music is consistently ranked among the strongest professional music schools in Canada. It attracts outstanding students and faculty in composition-theory, music education, musicology, and performance. The school is large enough to provide a wide variety of experience for students seeking degrees in music. At the same time, the atmosphere of a smaller school prevails with emphasis on individualized instruction in performance, comparatively small classes, and a faculty and staff that cares about its students. As a significant cultural resource, the School of Music serves the musical needs of the community, the region, the state, and the nation, and its influence is felt on an international level as well. One measure of a university's quality is the success of its graduates. Among the more than 10,000 alumni of the School of Music are 5 Pulitzer Prize winners in composition; members of major symphony orchestras, opera companies, jazz ensembles, and professional choral groups; and faculty members at many of the nation's most prestigious colleges and universities. Music education graduates direct some of the finest elementary and secondary music programs throughout Canada as well as in foreign countries. The school is proud of its record in assisting qualified graduates to assume leadership roles in the music profession through career counseling and professional advising.

### Programs offered

The Rocky Mountain School of Music has 2 degree programs available:

#### Bachelor of Music

Specializations available in:

- Applied Music
- Composition-Theory
- Music History
- Open Studies

## Bachelor of Music Education

Specializations available in:

- Choral Music
- General Music
  - Instrumental Music

## Divisions

The school currently has the following divisions:

- Brass
- Composition-Theory
- Music Education
- Musicology
- String
- Woodwind
- Accompanying
- Jazz
- Organ
- Percussion
- Piano
- Piano Pedagogy
- Voice Divisions

## Faculties

The strength of the school lies in its distinguished and internationally known faculty, who are committed to teaching and at the same time maintain active performance schedules, contribute substantially to research in all areas of music. The school is justifiably proud of the excellent facilities, nationally recognized degree programs, and enjoyable campus life, but these are secondary considerations when compared to the quality education provided by the faculty for the students.

The professional relationship between students and faculty is based upon mutual respect and a common interest in the quest for musical knowledge and artistry. There are nearly 100 full-time faculty members in music, which provides a student to faculty ratio of approximately 20 to 1. The wealth of experience the faculties bring to the classroom, studio, concert hall, or research facility, is supported by their continuous commitment to excellence.

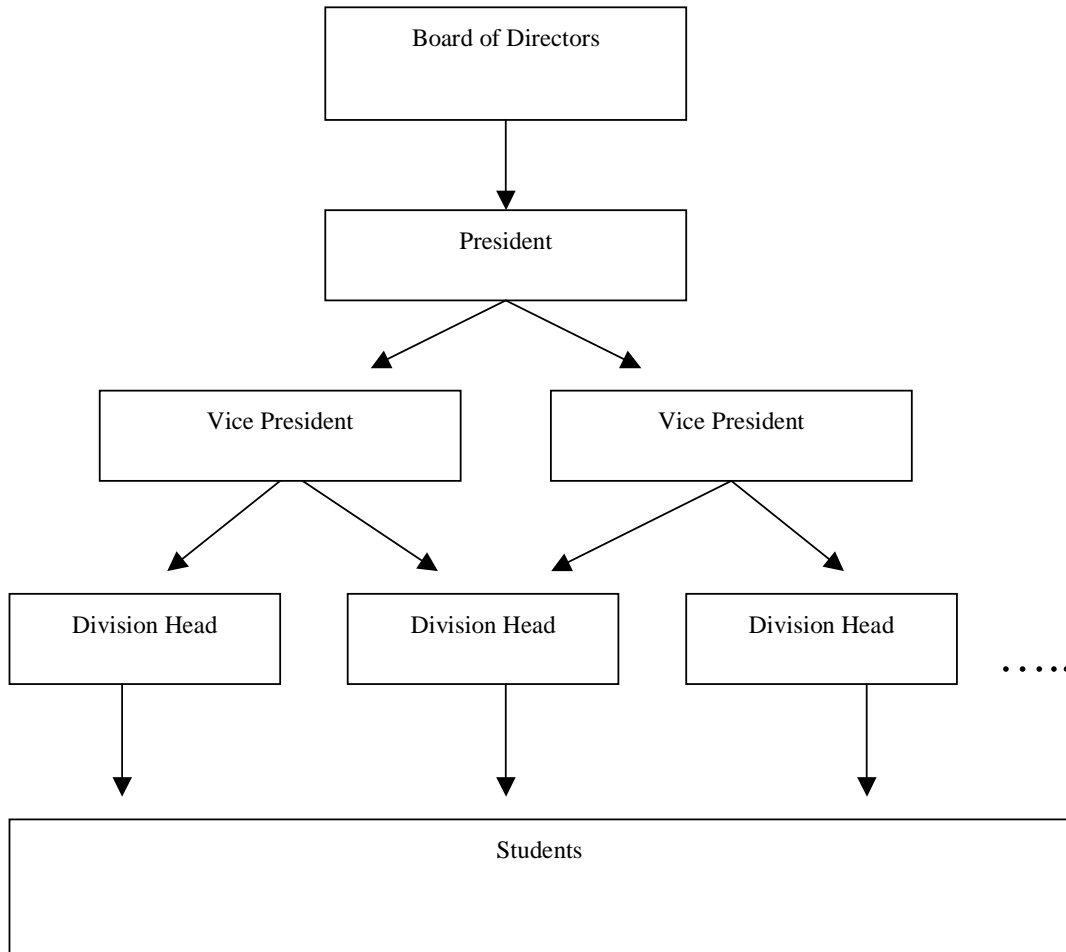
## Buildings and Facilities

Currently the school has the following buildings:

- Rocky Band Building
- Computer-Assisted Music Lab
- Music Project Lab
- Experimental Music Lab
- Performing Arts Lab
- Music Library Building
- School of Piano Building
- Jeff Memorial Hall

## Admin Structure

The school has a Board of Directors for supervising the overall operations. The school president reports directly to the board. There are 2 vice presidents sharing the work load of administering the divisions of the school.



## IT Infrastructure

There are currently 2 IT staffs in the school. The existing network is purely DOS-based with Netware 3.1 as the network OS. No special feature has been implemented.

The registration office currently runs a 386PC with dBase3+ as the school registration system. The staffs generally use the old Geoworks software for designing flyers and other publications.

Due to the availability of funding last year, the school managed to install a 100BaseFX network across the campus. In terms of bandwidth, the school has more than enough bandwidth for use.

## Levels of Skills in IT

According to the IT Supervisor of the school, their students are very positive towards the use of IT in their learning process. Some students already uses computer to do the music composition. Others have uses notebooks to take notes during lectures.

## Risk Management

In the past the school was once in difficulties due to a problem in funding. There had been a situation where the salaries of the teachers were not distributed on time, leading to a strike and a delay in the class progresses. Although this situation is not likely to happen again, the management insists on carry out a risk management process. It has been suggested that Microsoft's Risk Management process is the ideal methodology to use.

## Future Vision

The school plans to open a branch in Austin, Texas. The management is willing to pay for a high speed 128K dedicated connection between the main campus and the new location. This new location will mainly be used to teach Music History and Music Appreciation.

The school will also open up a branch in London. This new location will use dial up modem to connect to the main office. This new location will mainly be a marketing office to promote the the school's "Student Exchange" program.

The school wants to deploy WEB BASED software applications for everyone to use. However, there are some important legacy apps that cannot be web enabled.

The education department has notified the school that, starting from the next academic year, about 10,000 students will be transferred to the school annually as one of the other music school in the state will cease to operate eventually.

Additionally, the school will offer distance learning courses for students off campus.