

Case Study # 2

You are an external Network Consultant with specialized skills in designing Win2000 directory services. You are recently requested by the Supreme Manufacturing Company to design the Security and the Directory for the entire company.

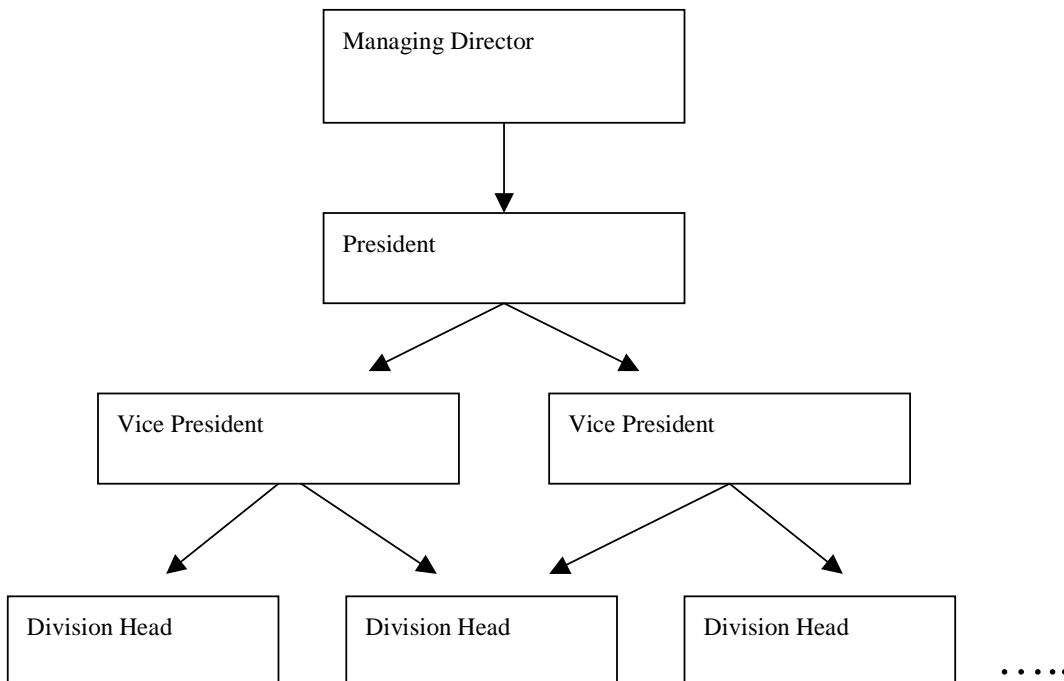
Company Background

Supreme Manufacturing Company was established in the early 80s, with its root in Korea as a manufacturer of Photo Albums. Due to the strong predicted growth of its business in the coming years, it plans to develop at least 10 new types of albums in the foreseeable future.

Divisions

Currently the production of each product category is under the supervision of its own divisional head. The logic behind this arrangement is that the production of each type of albums actually requires totally different types of expertise.

The president directly oversees the operations of the different divisions. Since the president himself owns the company, there is no board of directors. However, there is a position called Managing Director which is at the top of the hierarchy. This is required by the law of Korea. His wife took the position.



Product offerings

Supreme's main products are photo albums. Products offering include:

Covered ring type albums:

- Self adhesive sheet albums.
- P.V.C. slip in sheet albums
- Memo type paper sheet albums.

Flip up type albums:

- Single size cover albums.
- Double size cover albums.
- Library sLtype albums.

Slip in albums:

- Soft transparent P.V.C cover albums.
- Vinyl padded cover albums.
- Minimax type albums.

Post bound type albums:

- Self adhesive sheet albums.
- Slip in P.V.C sheet albums.

Binder type albums:

- Self adhesive sheet albums.
- Slip in P.V.C. sheet albums.

Memo slip in albums:

- Glue binding type albums.
- Needlework binding albums.

Book bound type albums:

- Wood free paper sheet classic type albums.
- Self adhesive sheet albums.

Wedding albums:

- Hinge style joint albums
- Bolt screw type albums.(Post bound type).

Due to the strong predicted growth of its business in the coming years, it plans to develop at least 10 new types of albums in the foreseeable future.

Supreme is manufacturing not only the finished goods, but also the separated parts of the photo albums, such as

1. Covers
2. Sheets
3. Labels

Apart from manufacturing products under their own brand, they also accept special orders in term of O.E.M.

Locations and Staffing

Supreme has three locations, one being the head office and the others being the factories. The president is located in the head office, while the divisional heads are completely mobile – they have to travel around the factories.

Head office

Dokok-Dong, Gangnam-Gu, Seoul, Korea
Number Of Staff: 10

Korea Branch - Factory

Goori City Kyunggi-Do, Korea
Number Of Staff: 600

China Branch - Factory

Yangzhong, Jiangsu, China
Number Of Staff: 300

US Branch – Sales Office

Recently opened in San Francisco of California
Number Of Staff: 30

IT Structure

Currently only the head office has a LAN running NT 4.0. The domain model is a simple single domain model. They do not YET have dedicated connection to the factories. The factories are using Win95 as dial up clients to connect to the head office server running RAS. In the coming months 256K dedicated connection will be installed. Currently, within all locations there are already 100MBPS LANs running smoothly.

The president recognizes the importance of IT, and is planning to spend 30% of its last year revenue on the complete re-design of the IT infrastructure.

Because of the growing importance of IT, the head office will house a new IT department. This department is further broken down into 4 smaller departments:



Management would like to push for the deployment of a web based solutions for the entire companies as well as the partners to enter and retrieve information to and from a database on the internet after the new Windows 2000 infrastructure is in place. Information stored in this database will include customer information, supplier contracts and next year's projection. The server will be used to host this application and the company's web site.